

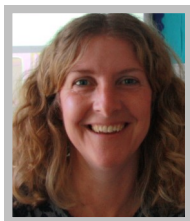
Rising Reception NS Autumn Timetable 2020



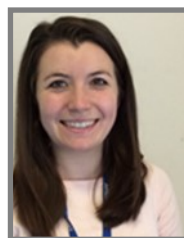
	Monday	Tuesday	Wednesday	Thursday	Friday
9.00-10.15	Communication and Language (Phonics) Child initiated learning	Mathematics Child initiated learning Ballet 9:30-10:00 (Miss Lizzie—Hall)	Communication and Language (Phonics) Child initiated learning	Maths Child initiated learning	Celebration Assembly Dance and Drama 9.30-10.00 (Carla O’Sullivan—Hall) Communication and Language Child initiated learning
10.15-10.30	Snack	Snack	Snack	Snack	Snack
10.30-11.00	Outside exploration Child initiated learning	Outside exploration Child initiated learning	Outside exploration Child initiated learning	Outside exploration Child initiated learning	Outside exploration Child initiated learning
11.00-12.15	Mathematics Child initiated learning Topic– KUW & ICT	Communication and Language Child initiated learning PSED	Sport (Hall/Playground) Topic– KUW & ICT	Music 9.30-10.00 (Frances Philpot– Music Room) Communication and Language Child initiated learning	Mathematics Child initiated learning French
12.15 -1.30	Lunch and outside play	Lunch and outside play	Lunch and outside play	Lunch and outside play	Lunch and outside play
1.30-3.30	Forest School 1.30-2.15 (Jay Bristow—Playground) Child initiated activities linked to the topic	Cookery (Mrs Barnett– Nursery/Rising Reception) Child initiated activities linked to the topic	Science Fun (Mrs Firth—Rising Reception) Child initiated activities linked to the topic	Swimming (Mrs Aisdis Cawley– swimming pool) 1.45-3.00 Child Initiated play linked to the topic	Gymnastics (Mrs Firth– Hall) 2.15-3.00 Child Initiated play linked to the topic



Mrs Smyth
Rising Reception
Class Teacher



Mrs Reynolds
Teaching
Assistant



Mrs Barnett
Nursery



Nonie
Cookery Teacher



Mr Grayson
Sports Teacher



Mrs Philpot
Music Teacher



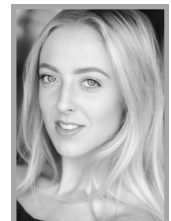
Mrs O’Sullivan
Dance & Drama



Mrs Cawley
Swimming



Jay Bristow
Forest School



Miss Lizzie
Ballet Teacher